



SOCIETY OF LEADERSHIP FELLOWS,  
ST GEORGE'S HOUSE, WINDSOR CASTLE

## **Power and Responsibility: Navigating Leadership Dynamics**

from 6.00pm on Tuesday 3<sup>rd</sup> until 4pm on Wednesday 4<sup>th</sup> June

**\*\*Fully Booked\*\***

### **Participants List** (at 1<sup>st</sup> April)



**Alex Dunn**  
Leadership Fellow

**Director, Money Movement Innovation & Strategic Initiatives, Visa**

*A world leading digital payments network.*



**Annabel Berry**  
Leadership Fellow

**Co-Founder, Leading Cyber**

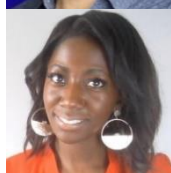
*Empowering inclusive leadership and high-performing teams in cybersecurity to increase cyber resilience.*



**Ben Roome**  
Leadership Fellow

**Chief Executive Officer, Mova**

*A UK joint venture of EE, Virgin Media O2, Three and Vodafone.*



**Christina Brooks**  
Leadership Fellow

**Founder & CEO, Ruebik**

*Pairing exceptional talent with progressive organisations.*



**Heledd Kendrick**  
Leadership Fellow

**Founder & CEO, Recruit for Spouses Ltd**

*Supporting the communities surrounding our Armed Forces.*



**John May**  
Leadership Fellow

**Chief Executive, Cats Protection**

*Working towards a world where every cat is treated with kindness and an understanding of its needs.*



**John Yarham**  
Leadership Fellow

**Interim Chief Executive, The Careers & Enterprise Company**

*National body for careers education in England.*



**Katerina Kolyva**

Leadership Fellow

**Chief Executive Officer, The Education and Training Foundation**

*National professional development body for the Further Education and Skills sector.*



**Liz Hampson**

Leadership Fellow

**Partner, Life Sciences & Health Innovation Strategy. European Leader, Deloitte Health Equity Institute. Deloitte Consulting.**



**Liz Mayes**

Leadership Fellow

**Chief Executive, Connect Northumberland**

*Creating a larger and more capable Northumberland Workforce.*



**Minoo Tayebi**

Leadership Fellow

**Senior Director of Compliance Operations, Hitachi**

*Contributing to society through development of superior, original technology and products.*



**Nancy Hey**

Leadership Fellow

**Director, Evidence & Insight, Lloyds Register Foundation**

*Independent global charity that helps to protect life and property at sea, on land, and in the air.*



**Nina Robinson**

Leadership Fellow

**Non-Executive Director, Slough Children First and Governor, Oxford University Hospitals Trust NHS FT**



**Paul Arnold**

Leadership Fellow

**Deputy Chief Executive & Chief Operating Officer, Information Commissioner's Office (ICO)**



**Philip Lymbery**

Leadership Fellow

**Global Chief Executive, Compassion in World Farming**

*The leading international farm animal welfare charity.*



**Ruth Marvel**  
Leadership Fellow

**Chief Executive Officer, The Duke of Edinburgh's Award**

*Charity and Social Enterprise sector.*



**Sonya Chowdhury**  
Leadership Fellow

**Chief Executive Officer, Action for M.E.**

*Supporting those with Myalgic Encephalomyelitis.*



**Tim Hardy-Lenik**  
Leadership Fellow

**Global Head of Engagement, Diversity, Equity & Inclusion, Belron International**

*Making a difference with real care.*



**Vishal Desai**  
Leadership Fellow

**Chief Risk Officer & Board Director, MS Amlin.  
Global Risk Strategy Advisor, Mitsui Sumitomo International Group**

*Insurance company*



**Will Burchell**  
Leadership Fellow

**Chief Executive Officer, Bone Cancer Research Trust**

*The leading charity dedicated to fighting primary bone cancer.*



**Chris Blakeley**  
Facilitator

**Facilitator, Society of Leadership Fellows**



**Tony Wood**  
Facilitator

**Facilitator, Society of Leadership Fellows**