



SOCIETY OF LEADERSHIP FELLOWS,  
ST GEORGE'S HOUSE, WINDSOR CASTLE

## Leadership Focus and Attention

from 6.00pm on Tuesday 6<sup>th</sup> until 12 noon on Friday 9<sup>th</sup> May

### Participants List



**Alison Barnes**

Leadership Fellow

**CEO, New Forest National Park Authority**

*Conserving and enhancing the natural beauty, wildlife and cultural heritage of the National Park.*



**Amanda MacAuley**

Leadership Fellow

**Managing Consultant, BJSS.**

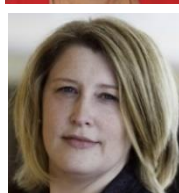
*Technology and engineering consultancy.*



**Amanda Nobbs**

Leadership Fellow

**Local Government Boundary Commissioner for England, and Chair of the Marine Conservation Society.**



**Charlotte Sweeney**

Leadership Fellow

**Thought leader and specialist in diversity and creating inclusive cultures.**

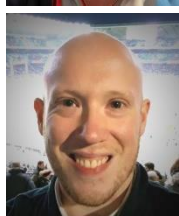


**Clare Lyons-Collins**

Leadership Fellow

**Chief Pivoter, We Pivot**

*Helping people have a long, happy, healthy and fulfilling retirement.*



**Darren Jaundrill**

Leadership Fellow

**Co-Founder and Chair, Ignis Lodge**

*Igniting brighter futures for veterans, care leavers and those in crisis.*



**David Sobo**

Leadership Fellow

**Director of Operations & Deputy CEO, The EDT (Engineering Development Trust).**

*Connecting young people with industry and inspiring STEM futures.*

COORDINATING STAFF AT ST GEORGE'S HOUSE

Nicola Pryer, Leadership Coordinator, Tel 01753 848791

Catherine Morgan, House Manager



**Eva Kreienkamp**  
Leadership Fellow

**Chief Learning Officer, EK Consulting.**



**Indy Singh Hothi**  
Leadership Fellow

**Director, Council Member & NED.**  
*Strategy & Transformation.*



**Kate Birtles**  
Leadership Fellow

**Customer Services Director, Biffa.**  
*UK leading integrated waste management company*



**Lisbeth Pilegaard**  
Leadership Fellow

**Chair of Executive Committee, European  
Endowment for Democracy (EED)**



**M. Kathleen Murphy**  
International Leadership Fellow

**Professor & Associate Dean, Global Health &  
Community Engagement, University of Texas  
Medical Branch School of Nursing**



**Michelle Endacott**  
International Leadership Fellow

**Chief Executive, The King's Trust Australia.**  
*Providing a sustainable future for Australia, where  
young people, military families and communities  
thrive.*



**Patrick O'Luanaigh**  
Leadership Fellow

**CEO, nDreams.**  
*The largest global virtual reality game developer and  
publisher.*



**Rob May**  
Leadership Fellow

**Executive Chairman, ramsac.**  
*Outsourced IT Services, Cybersecurity and AI  
Consultants.*



**Sarah Walker-Smith**  
Leadership Fellow

**Group Chief Executive, Ampa LLP.**  
*Top 50 law firm & legal/professional services.*



**Tiia Peramaa**  
Leadership Fellow

**CEO, Avosylin Group**

*Mission-based Finnish-owned enterprise, offering high-quality child protection services.*



**Tim Welch**  
Leadership Fellow

**Chief Executive, Cheshire & Wirral Partnership NHSFT.**

*Helping people and our population be the best they can be.*



**Chris Blakeley**

**Facilitator, Society of Leadership Fellows.**



**Karen Stefanyszyn**

**Facilitator, Society of Leadership Fellows.**