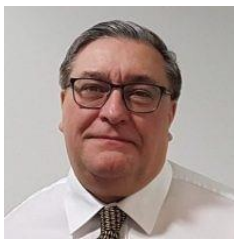


Community-led improvement and levelling up of 'left behind' neighbourhoods

Thursday, 9th – Friday, 10th September 2021

Participants



Stephen Aldridge

Stephen has been Chief Analyst/Chief Economist and Director for Analysis and Data at the Ministry of Housing, Communities and Local Government since 2015.

A government economist by background, Stephen was previously Chief Economist and then Director of the Strategy Unit in the Cabinet Office.

He has also worked in the Department of Trade and Industry; various predecessors to MHCLG; the Cabinet Secretariats; and Her Majesty's Treasury.



Sacha Bedding

Sacha is the CEO of Wharton Trust in Hartlepool and Chair of Trustees at Community Organisers. Over the last 10 years Sacha has transformed the Wharton Trust into being a catalyst for meaningful regeneration on the estate it serves. In an area where there are deeply entrenched issues of poverty Sacha has catalysed local people to campaign on housing issues and school exclusions and provide direct support to those in crisis.

For his long standing efforts to turn the neighbourhood around through hyper local engagement he was recognised in the 2020 New Year Honours as an MBE.

Sacha is also a regular commentator on local social and political issues for the BBC and Guardian.



Margaret Bolton

Margaret has a background in policy, research, public affairs and communications. Previous posts include Lottery Communications Director at Arts Council England and Policy and Research Director at NCVO. Before her current role at Local Trust, Margaret combined interim and change management contracts with consultancy work. Immediately prior to Local Trust, she worked at the Calouste Gulbenkian Foundation (CGF), leading on evaluation and learning and communications.



Daniel Crowe

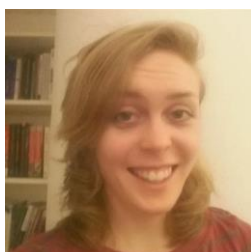
Daniel works in Local Trust's Policy Team, acting as secretariat for the All-Party Parliamentary Group for 'left behind' neighbourhoods. This includes managing the APPG's work and research programme, the relationships with parliamentary members and non-parliamentary external members, policy development, and the production of APPG reports, briefings and communications.

With a background in the UK co-operative movement, policy and communications for local and city regional government, and research for think tanks working on public services and community empowerment, his work at Local Trust leading on policy around 'left behind' neighbourhoods draws on his professional experience, personal interests and history of community activism.



Tim Davies-Pugh

Tim is the Director of Strategy and Programmes for Power to Change. He has worked across the voluntary, public, and social sectors having held director level roles within The National Lottery Community Fund, Cabinet Office, Office of Civil Society, Numbers for Good and GLT Partners. He has held board level roles at the Virgin Money Foundation, UnLtd, and is currently a trustee of SAFE Foundation, a charity supporting families to recover from the trauma of domestic violence & abuse.



Frances Foley

Frances is Deputy Director of Compass, where she leads on progressive alliance-building, strategic partnerships and campaigns. She has a background in democratic and constitutional reform and deliberative democracy, and has been involved in designing and facilitating citizens' assemblies. She is also a resident at Pembroke House, a settlement house and community centre in Walworth, where she runs their neighbourhood events. Frances is particularly interested in how communities can build strong local institutions which further expand democracy - and how these institutions inform national politics.



Nick Gardham

Nick is the CEO of Community Organisers and Director of the European Community Organisers Network. In his CEO role Nick works as an advisor to various Government Departments and national community sector bodies on citizen participation and community organising including (Department for Digital, Culture, Media and Sport, Home Office, Cabinet Office and Ministry for Housing Communities and Local Government) and serves as a Member of MHCLG Communities Partnership Board, acts as a Democracy Ambassador for Cabinet Office, and is a TeachFirst Ambassador ('06 Participant).



Christina Gray

A background in social science and community action has shaped Christina's understanding of health as a social justice issue. Christina has a long experience of working directly with communities and of value of community designed and led solutions. A particular influence has been the experience, early in her career of living and working with homeless men and women which introduced her to the unequal impact of life events, the fragility of human experience and the extraordinary capacity of the human spirit to survive. Most recently, as a Director of Public Health leading the Covid 19 response the importance of addressing structural inequality as been underlined as a public health first principle. Christina is a Fellow of the Faculty of Public Health and a Visiting Professor in the Faculty of Health and Applied Sciences at the University of the West of England.



Dan Gregory

Dan has supported social enterprises, charities and community organisations for over 15 years, developing policy at the highest level and delivering in practice at the grassroots. He has worked for the Treasury and Cabinet Office, where he led the development of government policy on social enterprise access to finance and the role of the voluntary and community sector in public service delivery. For SEUK, Dan has advised government departments globally on the development of social enterprise policies. He also works independently under the banner of Common Capital, delivering work for NCVO, Co-operatives UK, the Lottery and Oxfam, among others.



Paul Howell

Paul is the Conservative Member of Parliament for Sedgefield. He is a member of the Business, Energy and Industrial Strategy Committee. He also sits on numerous All Party Parliamentary Groups including 'Left Behind' Neighbourhoods, Accounting for Growth, Adult Education, Coalfield Communities, Conservation, Places and People, County, Cycling and Walking, Durham University, Financial Education for Young People, Furniture Industry, Housing and Planning, Housing in the North, Industrial Heritage, Net Zero, Sixth Form Education, UK Shared Prosperity Fund, and Weddings. He first stood (unsuccessfully) for local political office in 2010 and after a number of years working away from politics, he was elected to Durham County Council in 2017. In May 2019 he was elected to Darlington Borough Council and appointed to the Cabinet with the leisure portfolio. In the 2019 General Election he overturned a Labour majority of 6,059 to become Conservative MP for Sedgefield.



Alison Jones

Alison currently works as a Development Manager for Little Hulton Big and their legacy organisation a registered Charity CommUNITY Little Hulton.

Little Hulton is in Salford Greater Manchester and was identified in the Big Local Trust's report as a left behind community.

Their local high school also featured in the television programme Educating Greater Manchester

In her role in Little Hulton she is current working with local residents on a project to revitalise a left-behind park. They have already secured funding to develop a quarter of million pound BMX Track on the park working with the national Charity Access Sport and Pocket Park funding to create a natural play area.

They are now working on ideas to redevelop an under-used park pavilion this will include an asset transfer in the form of 25 year lease.

In a previous role when working in Manchester she was part of project to redevelop a community centre and create a sports and play areas on the land adjacent to the community centre this again involved an asset transfer.



Mike Kenny

Before he arrived in Cambridge, Michael held positions at: Queen's University, Belfast; the University of Sheffield, where he was appointed Head of the Department of Politics; and Queen Mary University of London, where he was the inaugural Director of the Mile End Institute.

He served on the Leverhulme Trust's Advisory Committee (2010-2018), was co-director of the British Academy's "Governing England" programme (2015-2018), and is currently a visiting Fellow at the UCL Constitution Unit, a member of an external experts panel convened by the Scottish Parliament to advise on the constitutional implications of Brexit, and a member of the advisory board of the Constitution Society.

He also serves on the scientific advisory panel for the 'Behaviour Change by Design' project funded by the Wellcome Trust, and the Management Board of the Centre for Sustainable Leadership, is senior advisor to 'The Science of Global Risk' project funded by the Templeton Foundation, and is a Fellow of the Academy of the Social Sciences.



Matt Leach

Matt has been CEO of Local Trust since 2017. Prior to joining Local Trust, Matt led social housing innovation agency HACT, spent time as a director at the ResPublica think tank and held a range of senior leadership roles in central government and the wider public sector, including as private secretary to then Housing Minister Nick Raynsford MP, CEO of civil society funder Capacitybuilders, Executive Director at social housing investment agency the Housing Corporation and founding Director of the London Thames Gateway Development Corporation.



Ben Lee

Ben has been involved in public policy research and development for 25 years. Much of his work relates to community renewal and public services at the neighbourhood level. He is currently on the senior team at the consultancy Shared Intelligence most often engaged in designing research, supporting organisations to evidence impact, conducting policy review, and facilitating peer learning. He works with community volunteers, public sector professionals, and elected representatives. He has also ended up being an expert on public libraries. He was a founding trustee of Local Trust from 2012 to 2020.



Toby Lloyd

Toby is the chair of [No Place Left Behind](#): the Commission into Prosperity and Community Placemaking, set up by the Create Streets Foundation to explore the potential for community empowerment and placemaking to improve lives and neighbourhoods in left behind places.

He worked as an advisor to local councils, housing associations, developers and the Mayor of London, before spending seven years as head of policy for Shelter. He then moved to No 10 Downing Street as the Special Adviser on housing and local government to Prime Minister Theresa May. His book, [Rethinking the Economics of Land and Housing](#), co-authored with two UCL economists, was published in 2017.



Molly Morgan Jones

Molly is the Director of Policy at The British Academy, the UK's national academy for the humanities and social sciences. Molly oversees all the Academy's policy work, on topics ranging from how the humanities and social sciences can shape a post-pandemic future for all to higher education and skills policy. Molly has specialised in research and innovation policy, working previously as a senior researcher at RAND Europe, for the UK Department for Environment, Food and Rural Affairs (Defra) and for the U.S. Food and Drug Administration (FDA). She has a DPhil from the University of Sussex in Science and Technology Policy and graduated magna cum laude with a BA in Biology from Northwestern University.



Catherine Murray

Cath is Chief Development Officer for Right to Succeed, a charity that works collectively to strengthen communities and systems that enable children and young people to succeed, where she oversees communications, policy and advocacy, fundraising, and business development.

Cath was previously the policy lead on exclusions and alternative provision at the Centre for Social Justice, and the programme lead for IntegratED, a 19-partner programme working to improve outcomes for excluded children. Prior to this, she worked as an education journalist at Schools Week and FE Week.

In her early career, Cath worked as a translator and interpreter in Spain then managed study-abroad programmes for university students in Central America.



Sarah Pearson

Sarah is a Professor of Social Policy Research at the Centre for Regional Economic Research and Director of the Social and Economic Research Institute (SERI) at Sheffield Hallam University.

She is an expert in community-led and neighbourhood renewal and has skills in the impact and process evaluation of social programmes designed to improve outcomes in disadvantaged areas. She has led projects for national and local government and UK charities and foundations. Recent work includes evaluation of place-based approaches to supporting young people at risk of knife crime and violence (Youth Endowment Fund), the Early Action Neighbourhood Fund (National Lottery Community Fund), and Children's Communities (Save the Children UK). Between 2001 and 2010, she was Deputy Director of the ten-year evaluation of the New Deal for Communities Programme.



Ryan Streeter

Ryan is a senior fellow and director of domestic policy studies at the American Enterprise Institute (AEI), where he oversees research in education, technology, housing, poverty studies, workforce development, and public opinion. Before joining AEI, he was executive director of the Center for Politics and Governance at the University of Texas at Austin.

Ryan has had a distinguished career in government service, which includes being deputy chief of staff for policy for Indiana Governor Mike Pence, special assistant for domestic policy to President George W. Bush at the White House, and policy adviser to Indianapolis Mayor Stephen Goldsmith. Outside of government, he has served as a senior fellow at the Legatum Institute and as a research fellow at the Hudson Institute.

He is the author of "Transforming Charity: Toward a Results-Oriented Social Sector" (Hudson Institute, 2001); the editor of "Religion and the Public Square in the 21st Century" (Hudson Institute, 2001); the coauthor of "The Soul of Civil Society: Voluntary Associations and the Public Value of Moral Habits" (Lexington Books, 2002); and a contributor to the Stephen Goldsmith book, "Putting Faith in Neighborhoods: Making Cities Work Through Grassroots Citizenship" (Hudson Institute, 2002).

In addition to his many television and radio appearances, which include BBC News, CNBC, Fox News, and MSNBC. Ryan's articles have been widely published in outlets including The Weekly Standard, The Washington Post, The Wall Street Journal, and National Review.

Ryan has a PhD in political philosophy from Emory University.



Sue Tibbals

Sue is a charity leader, campaigner and commentator who has worked in the social change sector for approaching thirty years. CEO of the Sheila McKechnie Foundation since January 2016, Sue is a leading thinker and writer on civil society and social change.

Previously she was CEO of Women in Sport, where she oversaw a spectrum of campaigns aimed at unlocking the potential of women's sport. She worked for The Body Shop in the late 90's where she was responsible for the global roll out of the pioneering Ruby campaign, which first made the connection between body image and self-esteem.

She is politically experienced including twice serving as a retained Ministerial Advisor. Sue was awarded an OBE for 'services to sport' in the 2014 New Year's Honour's list and has an Honorary Degree from Liverpool Edge Hill University for 'services to women's health'. She is Chair of the campaigning Platform 38 Degrees and a Trustee of Grapevine, a charity that helps all kinds of people experiencing isolation, poverty and disadvantage in Coventry and Warwickshire.



Angie Wright

b inspired is a Community Business and charity in Braunstone, Leicester. Utilising an asset base of £8 million, trading primarily in commercial and residential letting, b inspired exists to continue a strong track record of neighbourhood renewal in Braunstone and for its proud community. It offers a wide range of local services and creates real social impact.

Previously, Angie was a Programme Manager on large scale regeneration programmes in Leicester, including *New Deal for Communities* (Braunstone), Sure Start, Neighbourhood Nurseries Initiative and Children's Centres. Angie worked in Local Government for 14 years managing grant programmes, working to help the most deprived areas in the city.

Angie graduated from Loughborough University with a BSc in Communications, in her spare time she enjoys cooking, reading about ancient history and dog-walking!