



SOCIETY OF LEADERSHIP FELLOWS,
ST GEORGE'S HOUSE, WINDSOR CASTLE

Facilitating strategic ideas- building

from 6.00pm on Thursday 30th April until 3.30pm on Friday 1st May

Participants at March 9

(4 places left)



Albertha Charles
Leadership Fellow

Financial Services Partner, PwC
Focusing on insurance and asset management



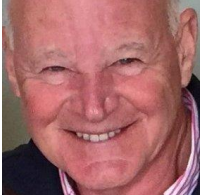
Alison Barnes
Leadership Fellow

CEO, New Forest National Park Authority
Conserving and enhancing the natural beauty, wildlife and cultural heritage of the National Park



Amanda Foister
Leadership Fellow

Chief Executive Officer, Gerutha CIC
Creating collaborative partnerships that deliver excellent high performing teams in the Third Sector



Brian Marcel
Leadership Fellow

Founder and Chair, IBCS Group
Award-winning No. 1 integrator of enterprise mobility systems and Blockchain supply chain solutions in Eastern Europe



Chris Daly
Leadership Fellow

Chief Executive, The Chartered Institute of Marketing
Creating marketing advantage for the benefit of professionals, business and society



Ellis Whitcomb
Leadership Fellow

Deputy Head & Director of Strategic Development, St Paul's Girls' School
One of the country's leading independent girls' schools

COORDINATING STAFF AT ST GEORGE'S HOUSE

Pete Ashby, Leadership Director
Nicola Pryer, Leadership Coordinator, Tel 01753 848791
Catherine Morgan, House Manager



Jane Townson

Leadership Fellow

**Chief Executive Officer, United Kingdom
Homecare Association and CEO, LifeSpan100 Ltd**
*Empowering people to make the most of the 100 year
life*



Jenny Jarvis

Leadership Fellow

**Chief Operating Officer, The Education and
Training Foundation**

*The workforce development body for the Further
Education and Training Sector*



**Judith Plummer
Braeckman**

Leadership Fellow

Senior Research Associate Future Dams

Cambridge Institute for Sustainability Leadership



Kate Welch

Leadership Fellow

Chief Executive, Social Enterprise Acumen CIC

Holder of the Queen's Award for Enterprise Promotion



Liam Burns

Leadership Fellow

Chief Programme Officer, The Scout Association

*Helping young people develop the skills they need to
succeed in life*

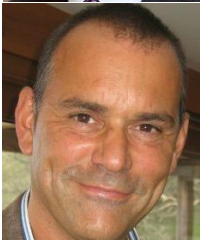


Michael Adamson

Leadership Fellow

Chief Executive, The British Red Cross

Helping people in crisis get the support they need



Mike Gaston

Leadership Fellow

**CEO and Principal, South Downs and Havant
Colleges**



Nick Smith

Guest

Chief Executive and Director, TTE Training Ltd

*'Outstanding' training provider set up by industry for
industry*

COORDINATING STAFF AT ST GEORGE'S HOUSE

Pete Ashby, Leadership Director

Nicola Pryer, Leadership Coordinator, Tel 01753 848791

Catherine Morgan, House Manager



Sam Fuller
Leadership Fellow

Managing Director, The Wellbeing Project
Putting health and wellbeing at the heart of an organisation's agenda



Pete Ashby

Director of the Society of Leadership Fellows

[Please click here to go back to our Leadership Conversations page](#)