



SOCIETY OF LEADERSHIP FELLOWS,  
ST GEORGE'S HOUSE, WINDSOR CASTLE

## From conflict to creativity

from 6.00pm on Thursday January 23 until 3.30pm on January 24

### Participants (fully booked at January 8)



**Alison Lowe**

Guest

**Chief Executive, Touchstone**

*Mental Health and wellbeing charity, specialising in working with BAME communities, coproduction and community development*



**Amanda MacAuley**

Leadership Fellow

**Founder and Director, Influence and Persuade**

*Helping organisations propel their growth through powerful message design & communication*

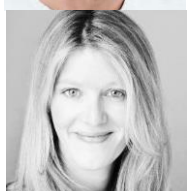


**Andreas Kaplan  
(Prof)**

Leadership Fellow

**Dean/Rector (elected), ESCP Europe Berlin**

*European multi-campus business school (Berlin, London, Paris, Madrid, Turin, Warsaw)*



**Becky Schutt**

Guest

**Head of Developing Inclusive and Creative Economies (DICE), British Council**



**Ben Foat**

Leadership Fellow

**Group General Counsel, Post Office**

*The largest retail network in the UK*



**Deb McKenzie**

Leadership Fellow

**Director/Chief People Officer, Public Health England**

*Specialising in change management, organisational development and talent management*



**Fleur Bothwick**

Leadership Fellow

**Director, Diversity and Inclusion (Europe, Middle East, India and Africa), EY**

*Global leader in assurance, tax and advisory services*

COORDINATING STAFF AT ST GEORGE'S HOUSE

Pete Ashby, Leadership Director

Nicola Pryer, Leadership Coordinator, Tel 01753 848791

Catherine Morgan, House Manager



**Joëlle Warren**

Leadership Fellow

**Founder & Executive Chair, Warren Partners**  
*One of the UK's largest independent Board Advisory and Executive Search firms*



**Karen Robb**

Leadership Fellow

**Partner, Grant Thornton LLP**  
*Shaping a vibrant economy*



**Kate Nash**

Leadership Fellow

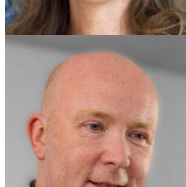
**Creator and CEO, Purple Space**  
*Fostering workplace disability networks and resource groups*



**Michelle Morgan**

Leadership Fellow

**Co-founder, Livity, a youth-led creative network.**  
**Also Founder, Pjoys – PJ's with purpose**



**MOK O'Keeffe**

Leadership Fellow

**Founder, The Innovation Beehive**  
*Releasing the creative potential of people at work*



**Narinder Sahota**

Guest

**Head of Transformational Consulting & Transformation Services EMEA CTO, Salesforce**



**Neslihan Olcay**

Leadership Fellow

**CEO, Wavemaker (Turkey)**  
*Full service international media agency*



**Nick Skelton**

Leadership Fellow

**Thought leader in the social use of technology within organisations, shaping digital tools to improve working cultures**



**Pratap Rughani (Dr)**

Guest

**Associate Dean of Research & Professor of Documentary Practices, London College of Communication, University of the Arts London**

**COORDINATING STAFF AT ST GEORGE'S HOUSE**

Pete Ashby, Leadership Director  
Nicola Pryer, Leadership Coordinator, Tel 01753 848791  
Catherine Morgan, House Manager



**Sally Dicketts**

Leadership Fellow

**Group Chief Executive, Activate Learning Group**

*A pioneering international education group*



**Theresa Burton**

Leadership Fellow

**CEO, Trillion Fund**

*A renewable energy investment platform, also offering white-label services for peer-to-peer lending and crowdfunding*



**Pete Ashby**

**Director of the Society of Leadership Fellows**

[Please click here to go back to our Leadership Conversations page](#)

COORDINATING STAFF AT ST GEORGE'S HOUSE

Pete Ashby, Leadership Director

Nicola Pryer, Leadership Coordinator, Tel 01753 848791

Catherine Morgan, House Manager